

Ready-To-Weld 200

Compact - Dual Station

The Ready-To-Weld 200 system offers the most reliable and largest reach robot in its class - all within a compact design. The RTW200 is one of Kawasaki's *Ready-To-Automate* series of pre-engineered solutions.

Add fixtures and you are ready to weld!

Working Envelope = 30x35 inches
Robot Reach = 1551 mm

Standard Cell Features

- Kawasaki FS10E Robot
 - IP67 wrist
 - IP65 arm
- 400 Amp Synergic Welding Power Supply
 - Mild steel
 - Stainless steel
 - Aluminum
- Common Base
- Rugged Construction
- Dual High-Speed Roll-Up Doors
- Meets ANSI/RIA R15.06-1999 Safety Standards
- Low Maintenance
 - 96,000 hours MTBF (robot and controller)
 - 10,000 hour maintenance intervals



Key Advantages

- Advanced Digital Welding Power Supply
 - Preset welding schedules
 - Consistent arc ignition
 - Low spatter welding
- Common Base
 - Quick installation
 - Easy relocation
- Compact Size
 - Perfect for side-by-side placement
 - Minimal floor space required
- Ergonomic Operator Load Height
- Quick Change Tooling Option
 - Fast fixture changeover including electrical and pneumatics

Ready-To-Weld 200

Compact - Dual Station

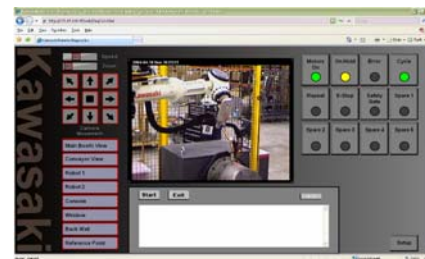


FS10E Robot

- 1551 mm (61 inch) Reach
- Compact Design
- Environmental Protection
- Large, Color Touch Screen
- 100 Weld Schedules
- Direct Control of Weld Functions

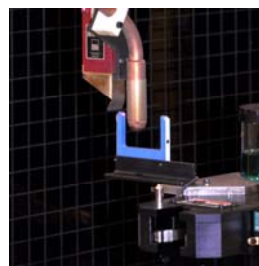
Available Options

- Remote Diagnostics & Monitoring
- Lincoln, Miller or Other Power Supplies
- AutoTCP Function
- Torch Cleaning Stations
- Water Cooled Torch
- Fume Extraction
- Aluminum Welding Packages
- Stainless Steel Welding Packages
- Twin Wire Welding Packages
- Touch Sensing
- Adaptive Welding
- PLC Packages



Remote Diagnostics & Monitoring

- View Cell from Anywhere in World
- Access All Robot Functions
- Remotely Diagnosis and Fix Problems



AutoTCP Function

- "Touchless"
- Automatically Set TCP
- Automatically Verify x, y, z, o, a, t